

- 1
- 2
- 3
- 4
- 5
- 6
- 7
- 8
- 9
- 10
- 11
- 12
- 13
- 14
- 15
- 16
- 17
- 18

BODY

AISI CF-8 Stainless Steel-precision casting, sandblasted matte finish.

PLUNGER

AISI 303 stainless steel.

SPRING

AISI 301 stainless steel.

LIFTING RING

AISI 301 stainless steel.

KNOB

High-resilience polyamide based (PA) technopolymer, black colour, matte finish (not removable).

STANDARD EXECUTIONS

- **GN 417-A-NI**: with lifting ring.
- **GN 417-B-NI**: with lifting knob.
- **GN 417-C-NI**: with lifting knob and rest position.
- **GN 417-D-NI**: with eyelet reinforced ring drive.

FEATURES AND APPLICATIONS

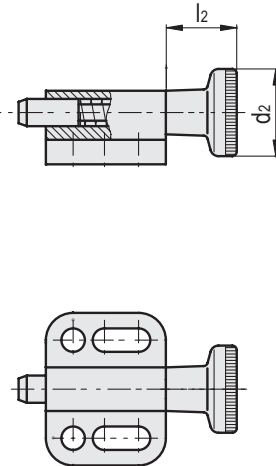
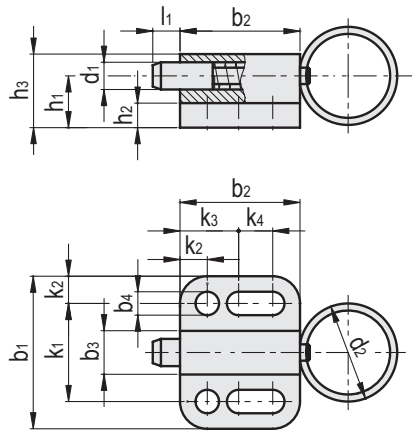
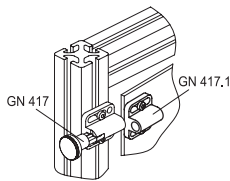
For optimal positioning of the plunger of GN 417-NI indexing plungers use positioning flanges GN 417.1 (see page 799).

The GN 417-D-NI eyelet reinforced implementation is particularly suitable for remote operation (e.g. via cable).



GN 417-A-NI

GN 417-B-NI



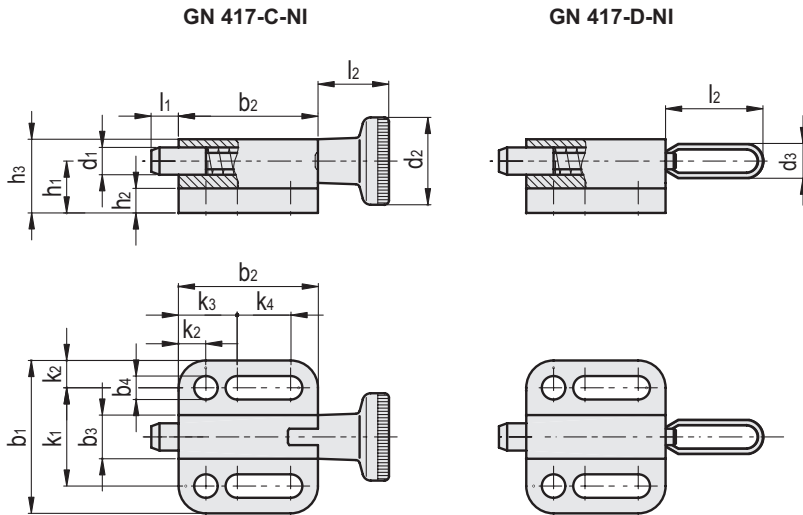
GN 417-A-NI

| Code | Description | d1 Plunger h11 Foro +0.08 +0.03 | d2 | b1 | b2 | b3 | b4 -0.2 | h1 | h2 | h3 | k1 ±0.05 | k2 | k3 | k4 | l1 | Spring preload [N] | Spring max load [N] | |
|----------|----------------|--|----|----|------|------|------------|------|-----|-------|-------------|-----|----|------|----|--------------------------|---------------------------|----|
| GN.20201 | GN 417-4-A-NI | 4 | 14 | 22 | 16.5 | 6 | 3.3 | 7 | 4 | 10 | 14 | 4 | 8 | 4.5 | 4 | 3 | 12 | 12 |
| GN.20211 | GN 417-5-A-NI | 5 | 18 | 28 | 22 | 8 | 4.3 | 9.5 | 4.5 | 13.5 | 18 | 5 | 10 | 7 | 5 | 5 | 24 | 23 |
| GN.20221 | GN 417-6-A-NI | 6 | 24 | 32 | 27.5 | 10 | 5.4 | 10.5 | 5 | 15.5 | 21 | 5.5 | 12 | 10 | 6 | 5 | 21 | 41 |
| GN.20231 | GN 417-8-A-NI | 8 | 30 | 34 | 33 | 12 | 5.4 | 12.5 | 6 | 18.5 | 23 | 5.5 | 12 | 15.5 | 8 | 6 | 22 | 65 |
| GN.20241 | GN 417-10-A-NI | 10 | 30 | 39 | 35 | 14.5 | 6.5 | 14.5 | 6 | 21.75 | 27 | 6 | 15 | 13.5 | 10 | 4 | 25 | 97 |

GN 417-B-NI

| Code | Description | d1 Plunger h11 Hole +0.08 +0.03 | d2 | b1 | b2 | b3 | b4 -0.2 | h1 | h2 | h3 | k1 ±0.05 | k2 | k3 | k4 | l1 | l2 | Spring preload [N] | Spring max load [N] | |
|----------|----------------|--|----|----|------|------|------------|------|-----|-------|-------------|-----|----|------|----|------|--------------------------|---------------------------|-----|
| GN.20202 | GN 417-4-B-NI | 4 | 12 | 22 | 16.5 | 6 | 3.3 | 7 | 4 | 10 | 14 | 4 | 8 | 4.5 | 4 | 10.5 | 3 | 12 | 12 |
| GN.20212 | GN 417-5-B-NI | 5 | 16 | 28 | 22 | 8 | 4.3 | 9.5 | 4.5 | 13.5 | 18 | 5 | 10 | 7 | 5 | 13 | 5 | 24 | 24 |
| GN.20222 | GN 417-6-B-NI | 6 | 18 | 32 | 27.5 | 10 | 5.4 | 10.5 | 5 | 15.5 | 21 | 5.5 | 12 | 10 | 6 | 15.5 | 5 | 21 | 41 |
| GN.20232 | GN 417-8-B-NI | 8 | 21 | 34 | 33 | 12 | 5.4 | 12.5 | 6 | 18.5 | 23 | 5.5 | 12 | 15.5 | 8 | 18 | 6 | 22 | 65 |
| GN.20242 | GN 417-10-B-NI | 10 | 25 | 39 | 35 | 14.5 | 6.5 | 14.5 | 6 | 21.75 | 27 | 6 | 15 | 13.5 | 10 | 22.5 | 4 | 25 | 106 |

Indexing and positioning elements



GN 417-C-NI



| Code | Description | d1 Plunger h11 Hole +0.08 +0.03 | d2 | b1 | b2 | b3 | b4 -0.2 | h1 | h2 | h3 | k1 ±0.05 | k2 | k3 | k4 | l1 | l2 | Spring preload [N] | Spring max load [N] | △ |
|----------|----------------|--|----|----|------|------|------------|------|-----|-------|-------------|-----|----|------|----|------|--------------------------|---------------------------|----|
| GN.20203 | GN 417-4-C-NI | 4 | 12 | 22 | 19 | 6 | 3.3 | 7 | 4 | 10 | 14 | 4 | 8 | 7 | 4 | 10.5 | 3 | 12 | 10 |
| GN.20213 | GN 417-5-C-NI | 5 | 16 | 28 | 25.5 | 8 | 4.3 | 9.5 | 4.5 | 13.5 | 18 | 5 | 10 | 10.5 | 5 | 13 | 5 | 24 | 21 |
| GN.20223 | GN 417-6-C-NI | 6 | 18 | 32 | 30.5 | 10 | 5.4 | 10.5 | 5 | 15.5 | 21 | 5.5 | 12 | 13 | 6 | 15.5 | 5 | 21 | 40 |
| GN.20233 | GN 417-8-C-NI | 8 | 21 | 34 | 37.5 | 12 | 5.4 | 12.5 | 6 | 18.5 | 23 | 5.5 | 12 | 20 | 8 | 18 | 6 | 22 | 68 |
| GN.20243 | GN 417-10-C-NI | 10 | 25 | 39 | 40 | 14.5 | 6.5 | 14.5 | 6 | 21.75 | 27 | 6 | 15 | 18.5 | 10 | 22.5 | 4 | 25 | 81 |

GN 417-D-NI

| Code | Description | d1 Plunger h11 Hole +0.08 +0.03 | d3 | b1 | b2 | b3 | b4 -0.2 | h1 | h2 | h3 | k1 ±0.05 | k2 | k3 | k4 | l1 | l2 | Spring preload [N] | Spring max load [N] | △ |
|----------|----------------|--|------|----|------|------|------------|------|-----|-------|-------------|-----|----|------|----|------|--------------------------|---------------------------|----|
| GN.20204 | GN 417-4-D-NI | 4 | 6 | 22 | 16.5 | 6 | 3.3 | 7 | 4 | 10 | 14 | 4 | 8 | 4.5 | 4 | 13 | 3 | 12 | 10 |
| GN.20214 | GN 417-5-D-NI | 5 | 7.2 | 28 | 22 | 8 | 4.3 | 9.5 | 4.5 | 13.5 | 18 | 5 | 10 | 7 | 5 | 15.5 | 5 | 24 | 20 |
| GN.20224 | GN 417-6-D-NI | 6 | 9.5 | 32 | 27.5 | 10 | 5.4 | 10.5 | 5 | 15.5 | 21 | 5.5 | 12 | 10 | 6 | 21 | 5 | 21 | 35 |
| GN.20234 | GN 417-8-D-NI | 8 | 11.8 | 34 | 33 | 12 | 5.4 | 12.5 | 6 | 18.5 | 23 | 5.5 | 12 | 15.5 | 8 | 26 | 6 | 22 | 57 |
| GN.20244 | GN 417-10-D-NI | 10 | 11.8 | 39 | 35 | 14.5 | 6.5 | 14.5 | 6 | 21.75 | 27 | 6 | 15 | 13.5 | 10 | 26 | 4 | 25 | 82 |